



Mpumalanga International Food Market

ROOF ASSEMBLY PN-001

SOLAR ARRAY PN-002

WALL PANEL SECT-A PN-003

WALL PANEL CSA PN-003

LAT: -25.3623
LNG: 30.9875



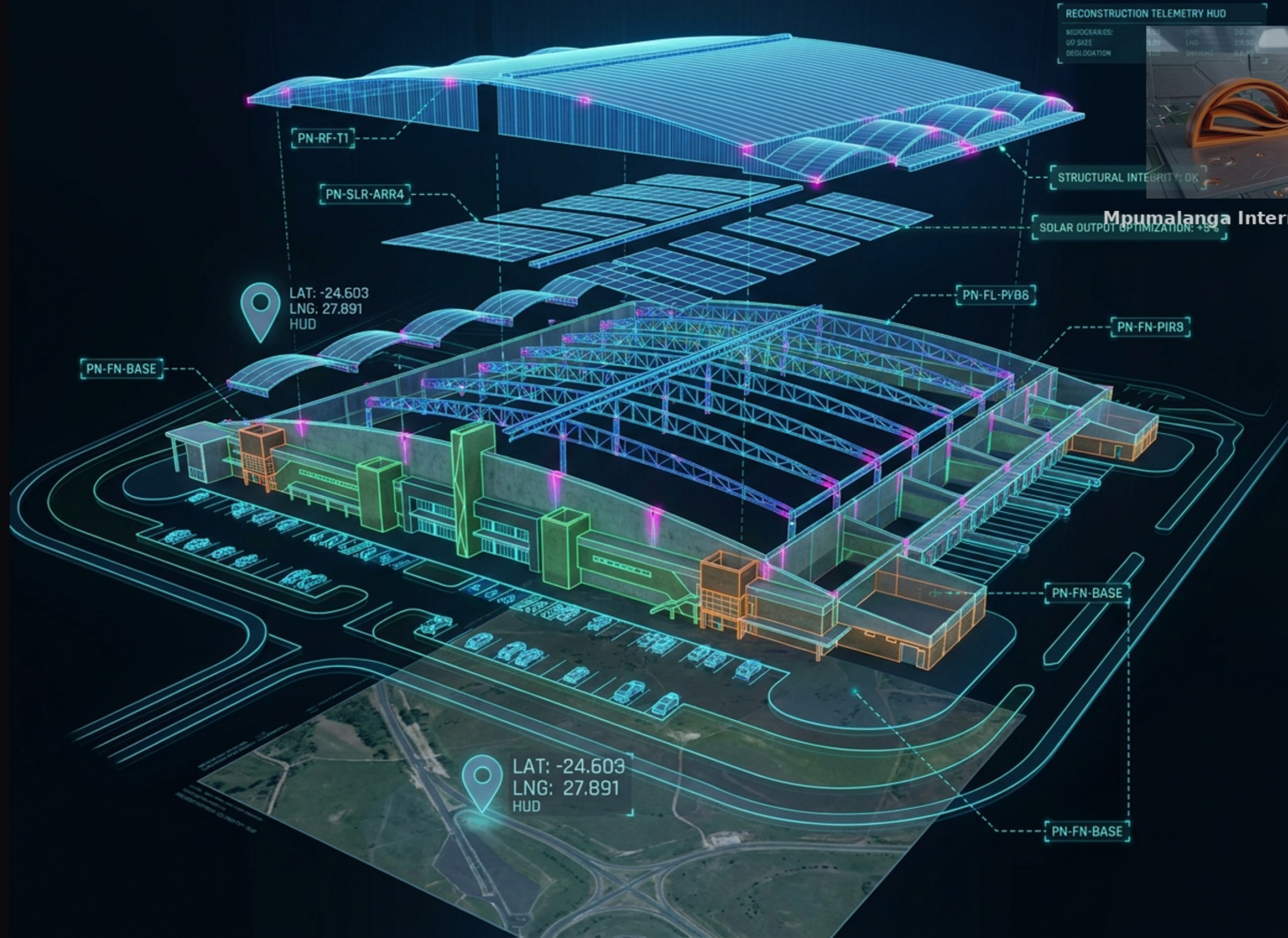
WALL PANEL SECT-A PN-003

DEPTH-LAYER GHOSTS

AI ASSIST:
STRUCTURAL INTEGRITY OK

TELEMTRY HUD

POINT COUNT: 5,245,100
POLYGONS: 1,050,000
CONFIDENCE: 92%



RECONSTRUCTION TELEMTRY HUD

MICROGRADES:	20.28
UP SIZE	23.90
DELOCATION	6.62



STRUCTURAL INTEGRITY: OK

SOLAR OUTPUT OPTIMIZATION: +5%

Mpumalanga International Food Market

PN-RF-T1

PN-SLR-ARR4

LAT: -24.603
LNG: 27.891
HUD

PN-FN-BASE

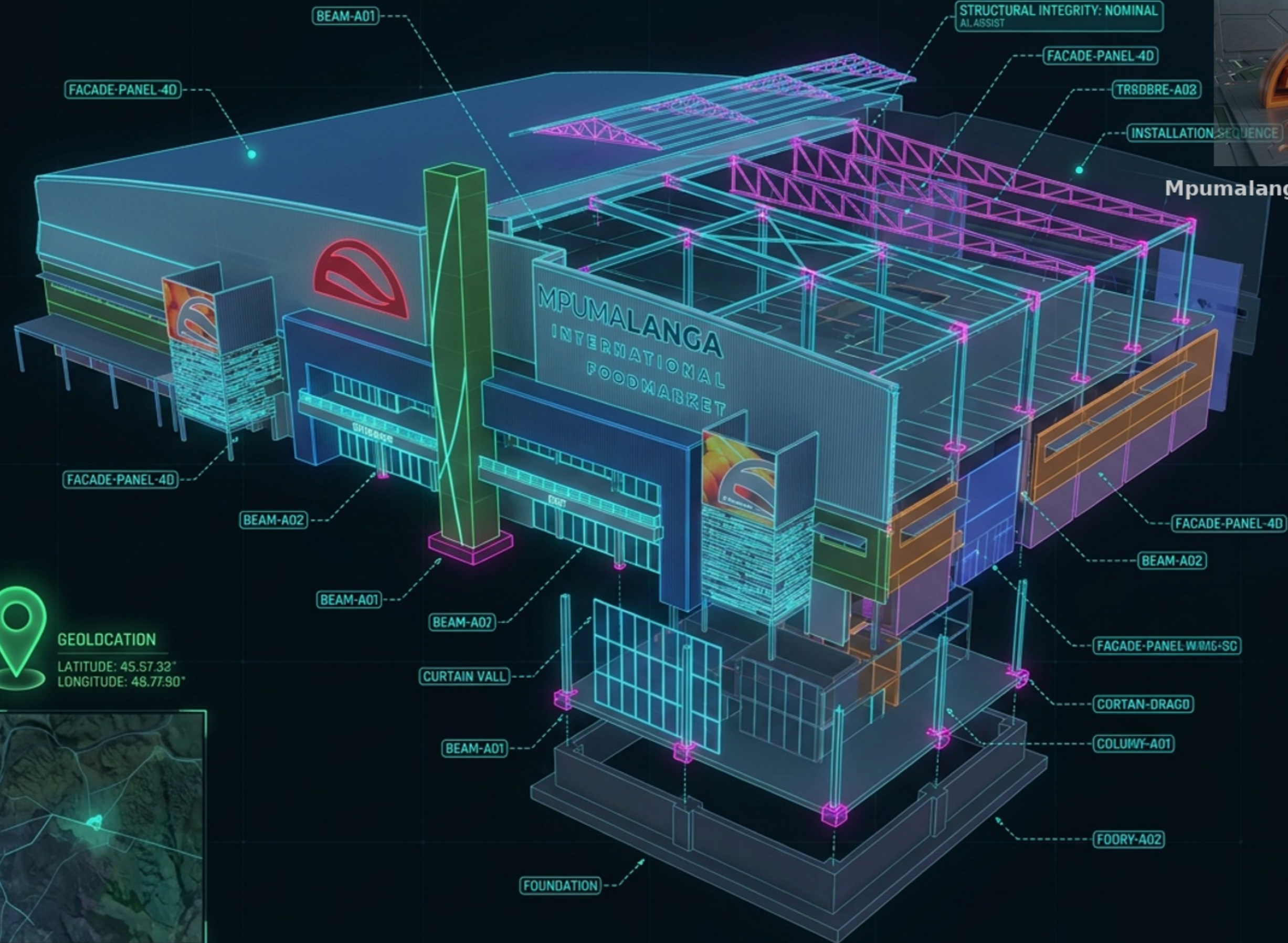
PN-FL-PV86

PN-FN-PIRS

PN-FN-BASE

LAT: -24.603
LNG: 27.891
HUD

PN-FN-BASE



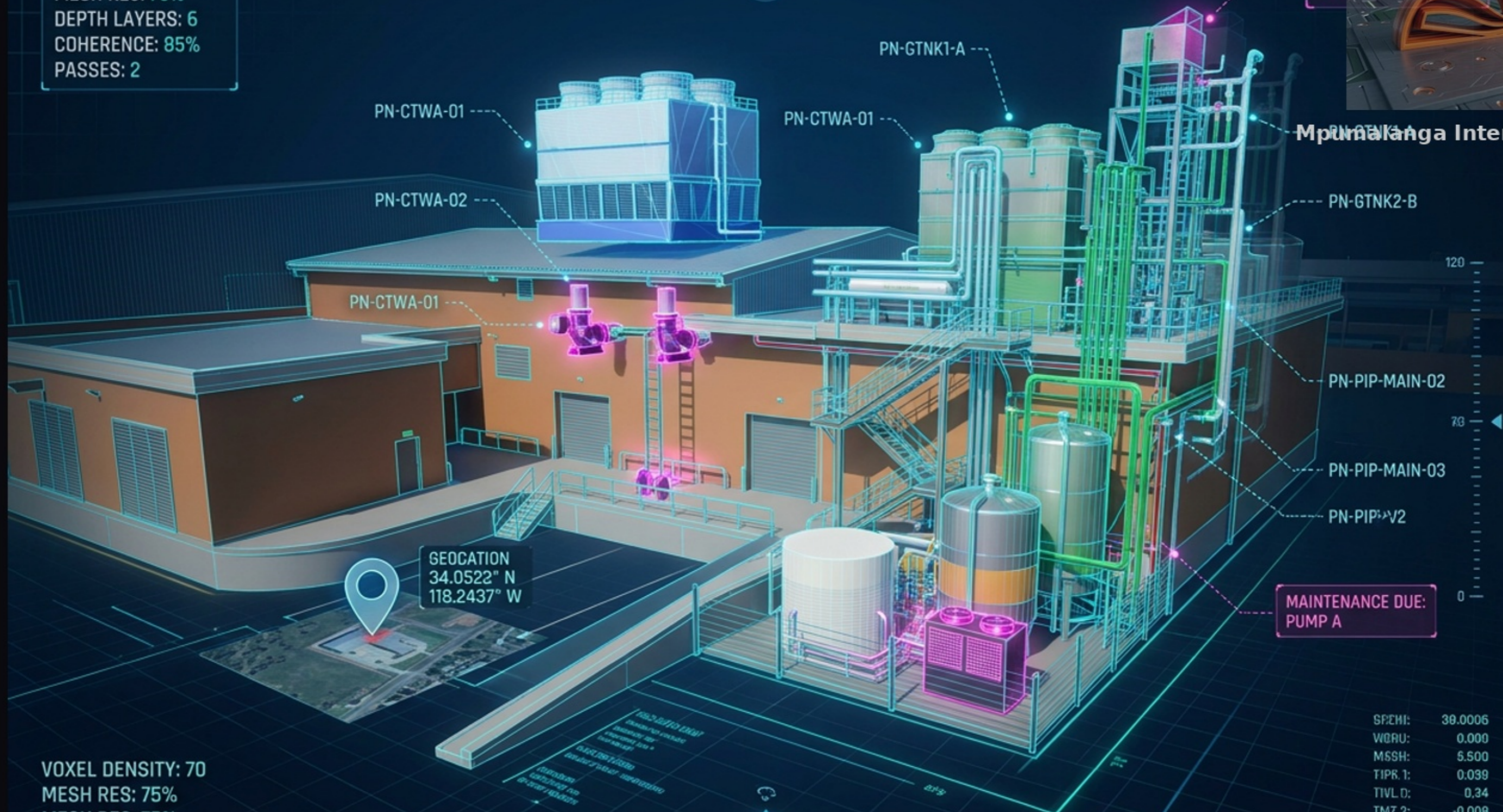
Mpumalanga International Food Market



GEOLDCATION
 LATITUDE: 45.57.32"
 LONGITUDE: 48.77.90"



VOXEL DENSITY: 70
MESH RES: 75%
DEPTH LAYERS: 6
COHERENCE: 85%
PASSES: 2



ANALYSIS: CRITICAL HEAT STRESS



Mpumalanga International Food Market

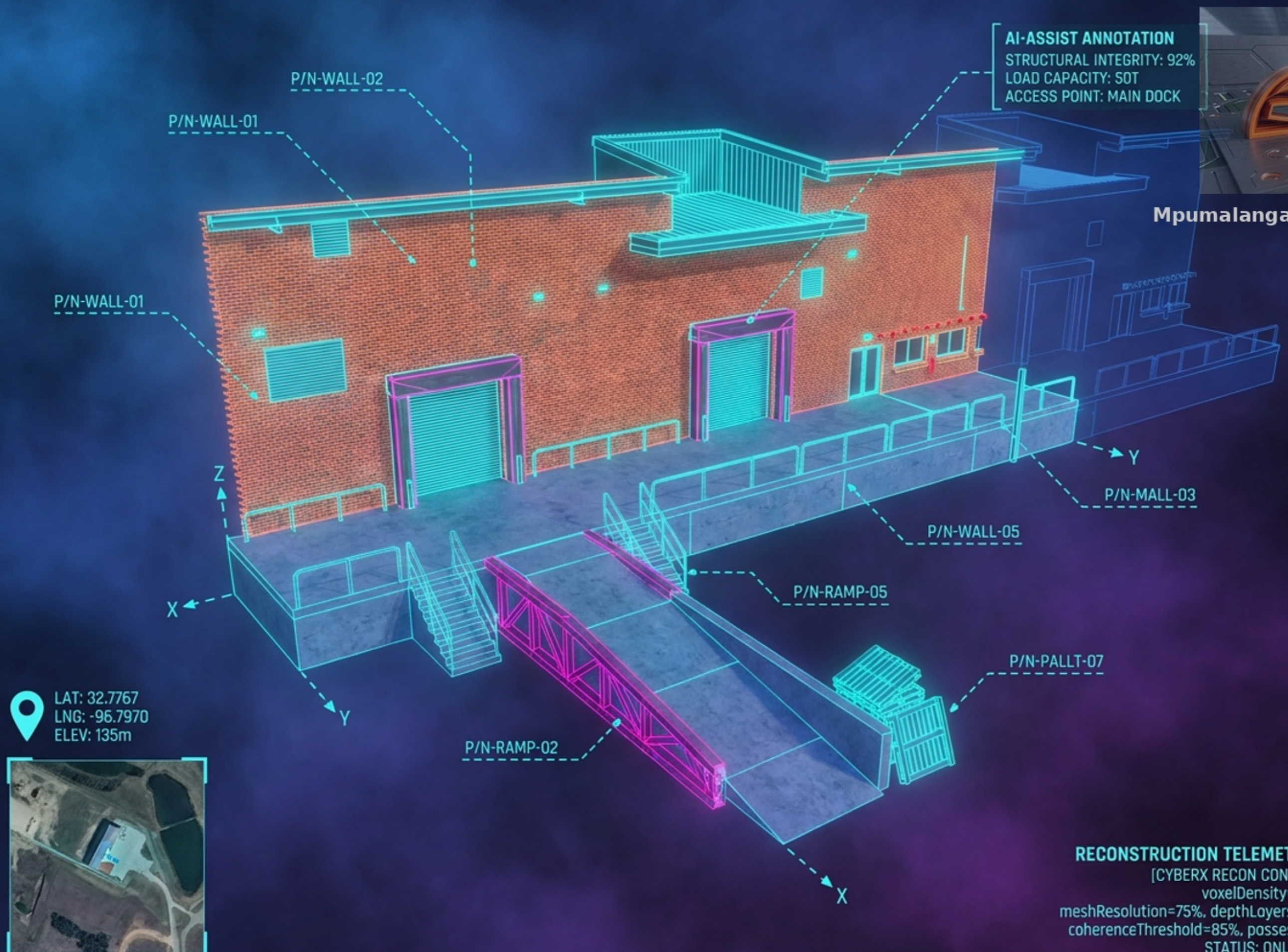
GEOLOCATION
34.0522° N
118.2437° W

MAINTENANCE DUE:
PUMP A

VOXEL DENSITY: 70
MESH RES: 75%
MESH RES: 75%
DEPTH LAYERS: 6
DEPTH LAYERS: 6
COHERENCE: 85%
PASSES: 2

SPEM: 38.0006
WGRU: 0.000
MSSH: 5.500
TIPK 1: 0.039
TIVL D: 0.34
TMZ 2: -0.008
LMDP: -0.032

MNS 134
PHPM 134
JNNG 23
HOSIT 2

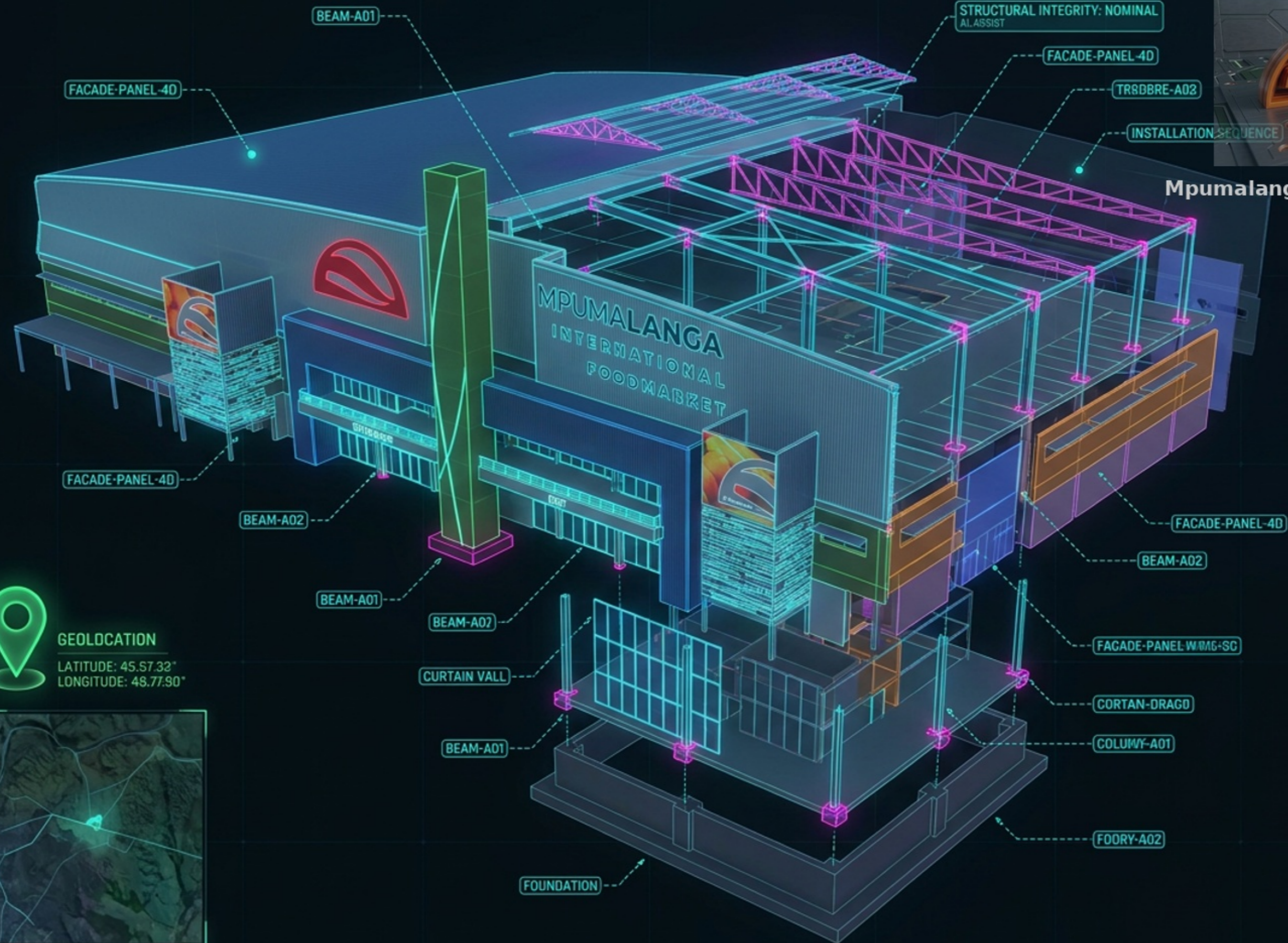


Mpumalanga International Food Market

LAT: 32.7767
 LNG: -96.7970
 ELEV: 135m



RECONSTRUCTION TELEMETRY
 [CYBERX RECON CONFIG]
 voxelDensity=70,
 meshResolution=75%, depthLayers=6,
 coherenceThreshold=85%, passes=2.
 STATUS: ONLINE.



Mpumalanga International Food Market



GEOLDCATION
 LATITUDE: 45.57.32"
 LONGITUDE: 48.77.90"



LAT: 34.0522
LNG: -118.2437



RF-401
ROOF SECTION

TW-102
CONCRETE CORE

Mpumalanga International Food Market
RF-401
ROOF SECTION

STRUCTURAL INTEGRITY
CHECK COMPLETED

TW-102
CONCRETE CORE

MEP-800
HVAC UNIT

FC-703
FACADE PANEL

FC-703
FACADE PANEL

STRUCTURAL INTEGRITY
CHECK COMPLETED



